

BLANKET TECHNOLOGY
MADE IN GERMANY

CONTI-AIR[®]
BLANKET TECHNOLOGY

CONTI AIR[®] STEEL CE
Coldset Printing Blanket

CONTI AIR® STEEL CE

The metalback blanket for excellent ink transfer and neutral paper feeding on 4-high tower presses.

- › Recommended for high print speeds
- › Developed for highest durability
- › Soft blanket construction
- › Excellent ink laydown behavior
- › Using the special CONTIAIR® microcell technology

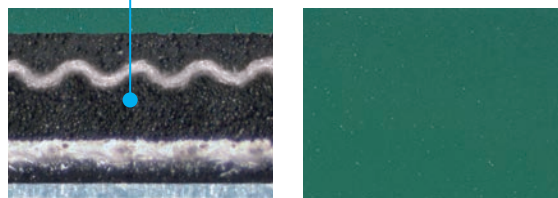
Guiding Value

		Standard
Application:	Coldset	
Nominal Thickness:	1.92 - 2.00 mm (According to Manufacturers Drawing)	DIN EN ISO 2286-3*
True Rolling (Paper feed characteristics):	negative	
Color:	green	
Surface finish:	ground	
Hardness of Surface Compound (shore A):	65	DIN ISO 48-4:2021-02**/**
Metal base:	Stainless Steel	
Backside:	Calibrated Film	

* Performed in accordance with the given standard. Please note that the procedure of testing could be deviate and that the number of samples tested may differ.
 ** The specified hardness of the cover compound can only be measured using test samples according to the standard. It is not possible to measure the hardness directly on the product itself.

Unsere Drucktücher verfügen über eine spezielle CONTI-AIR® kompressible Schicht geschlossener Mikrozellen mit Überdruck.

Our printing blankets have a special CONTI-AIR® compressible layer of over pressured microcells.



ContiTech Elastomer-Beschichtungen GmbH
 Breslauer Str. 14 | 37154 Northeim | Germany
 service@contiair.com
 www.contiair.com

The content of this publication is not legally binding and is provided as information only. The trademarks displayed in this publication are the property of Continental AG and/or its affiliates. Copyright © 2023 ContiTech AG, Hanover. All rights reserved. For complete information go to: www.continental-industry.com/disclosure
 Der Inhalt dieser Druckschrift ist unverbindlich und dient ausschließlich Informationszwecken. Für weitere Information besuchen Sie bitte: www.continental-industry.com/disclosure